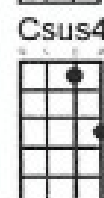
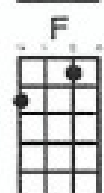
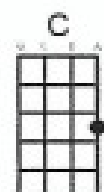
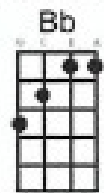
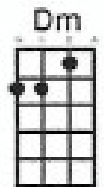


Moonlight Shadow Mike Oldfield/Maggie Reilly

UP₂₂

Hear this song at: <http://www.youtube.com/watch?v=tt8d3Shlfrg>

From: Richard G's Ukulele Songbook www.scorpex.net/uke.htm



The [Dm] last that ever she [Bb] saw him
[C] Carried away by a [F] moonlight [C] shadow
He [Dm] passed on worried and [Bb] warning
[C] Carried away by a [F] moonlight [C] shadow.
[F] Lost in a river last [C] Saturday night
[Dm] Far a[Bb]way on the [C] other side
He was [F] caught in the middle of a [C] desperate fight
And she [Dm] couldn't find [Bb] how to push [C] through

The [Dm] trees that whisper in the [Bb] evening
[C] Carried away by a [F] moonlight [C] shadow
Sing a [Dm] song of sorrow and [Bb] grieving
[C] Carried away by a [F] moonlight [C] shadow
[F] All she saw was a [C] silhouette of a gun
[Dm] Far a[Bb]way on the [C] other side
He was [F] shot six times by a [C] man on the run
And she [Dm] couldn't find [Bb] how to push [C] through

[Csus4] I [C] stay [Csus4] I [C] pray [F] See you in [Bb] heaven [C] far away
[Csus4] I [C] stay [Csus4] I [C] pray [F] See you in [Bb] heaven [Csus4] one [C] day

[Dm] Four am in the [Bb] morning
[C] Carried away by a [F] moonlight [C] shadow
I [Dm] watched your vision [Bb] forming
[C] Carried away by a [F] moonlight [C] shadow
[F] Star was light in a [C] silvery night
[Dm] Far a[Bb]way on the [C] other side
Will you [F] come to talk to [C] me this night
But she [Dm] couldn't find [Bb] how to push [C] through

[Csus4] I [C] stay [Csus4] I [C] pray [F] See you in [Bb] heaven [C] far away
[Csus4] I [C] stay [Csus4] I [C] pray [F] See you in [Bb] heaven [Csus4] one [C] day

Instrumental: [Dm] [Bb] [C] [F] [C] [Dm] [Bb] [C] [F] [C]

[F] Caught in the middle of a [C] hundred and five [Dm] [Bb] [C]
The [F] night was heavy but the [C] air was alive
But she [Dm] couldn't find [Bb] how to push [C] through
[Dm] [Bb] [C] Carried away by a [F] moonlight [C] shadow
[Dm] [Bb] [C] Carried away by a [F] moonlight [C] shadow [F]